

# aliada archangelos technical Specifications

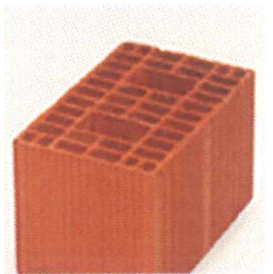
## Foundations & structure

reinforced concrete in accordance with existing regulations for earthquake resistant design. Design and supervision is done by external consultants (civil engineers).



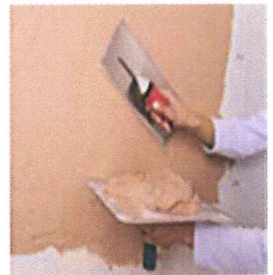
## Brickwork

Internal walls from clay hollow bricks 10cm thick. External wall will be thermal clay brick of a total thickness of 25cm (ub-200).



## Plastering

Main internal walls 2 layers of plaster and spatula finish and painted with emulsion paint. The bathrooms walls are tiled up to ceiling with ceramic tiles. The guest w.c. walls are finished with emulsion paint and ceilings are spatulated and finished with emulsion paint. External walls are plastered with three layers and finished with external use paint.



## Staircases:

The steps leading to the first floor are built from reinforced concrete, finished with marble treads and risers and a metal hand railing is applied to the staircase. In case of an attic, the staircase is italian made with a metal frame and hand railing and with wooden treads.



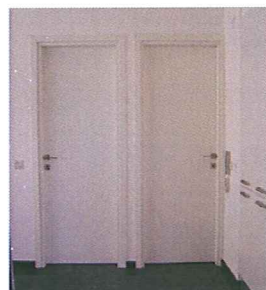
## External areas & parking

The garage has ceramic tiling. The garden has a layer of 15 cm thick class A soil.



## Entrance door Internal doors

Frame and leaf made out of solid wood. Italian made.



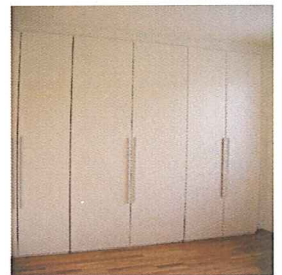
## External doors & windows

made out of aluminium secured on plaster. The ranges are MU3000 for the sliding doors and MU700 or MU2500 for the rest. All glass is double-glazed with green or grey tinting.



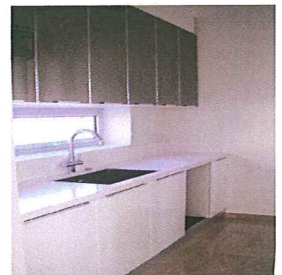
## Wardrobes

Italian made.

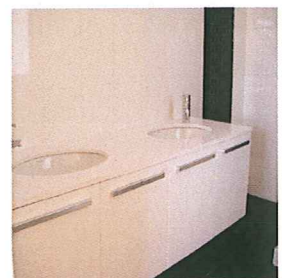


## kitchen

Italian made. The kitchen layout is fitted according to the architectural detail drawing, providing space for hob, oven, microwave oven, fridge and dishwasher (electrical appliances not included).



## Bathroom units: Italian made.



## Sanitary fittings

The sanitary fittings and fixtures are fitted according to the architectural detail drawings. The fittings are white in color, excellent in quality and of European standard.



## Mechanical installation

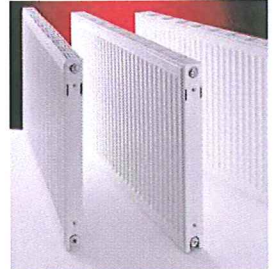
"Pipe in pipe" system is installed for hot and cold water and central heating. Installation of solar panels and water tank of 2 ton volume, along with water pressure system and hot water circulation pump.





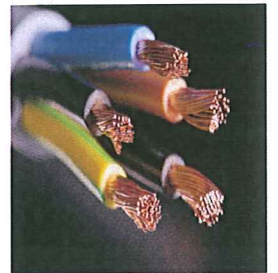
## Central heating & A/C

full installation of central heating (radiators ready for use), controlled in two zones, the ground floor and the first floor. There are also provisions for a/c wall split units in all the main areas.



## Electrical installation

The electricity installation in the house is a three-phase based, approved by the electricity authority (EAC). There are provisions for: alarm system, "home theatre" system, electric shutters in bedrooms, electric garage gate and garage door. All the telephone sockets are double and there is a full installation of entry phone. Full installation of TV system excluding the antenna and pole (local channels) satellite dish may be added.



## Roof insulation

For flat roofs (excluding the parts below the tiled roof) drainage slope is given using lightweight concrete and they are thermally insulated and damp-proofed using 30 mm polyurethane, finished with special paint. The sloped roofs are thermally insulated with extruded polystyrene of 50mm and roof tiling.

